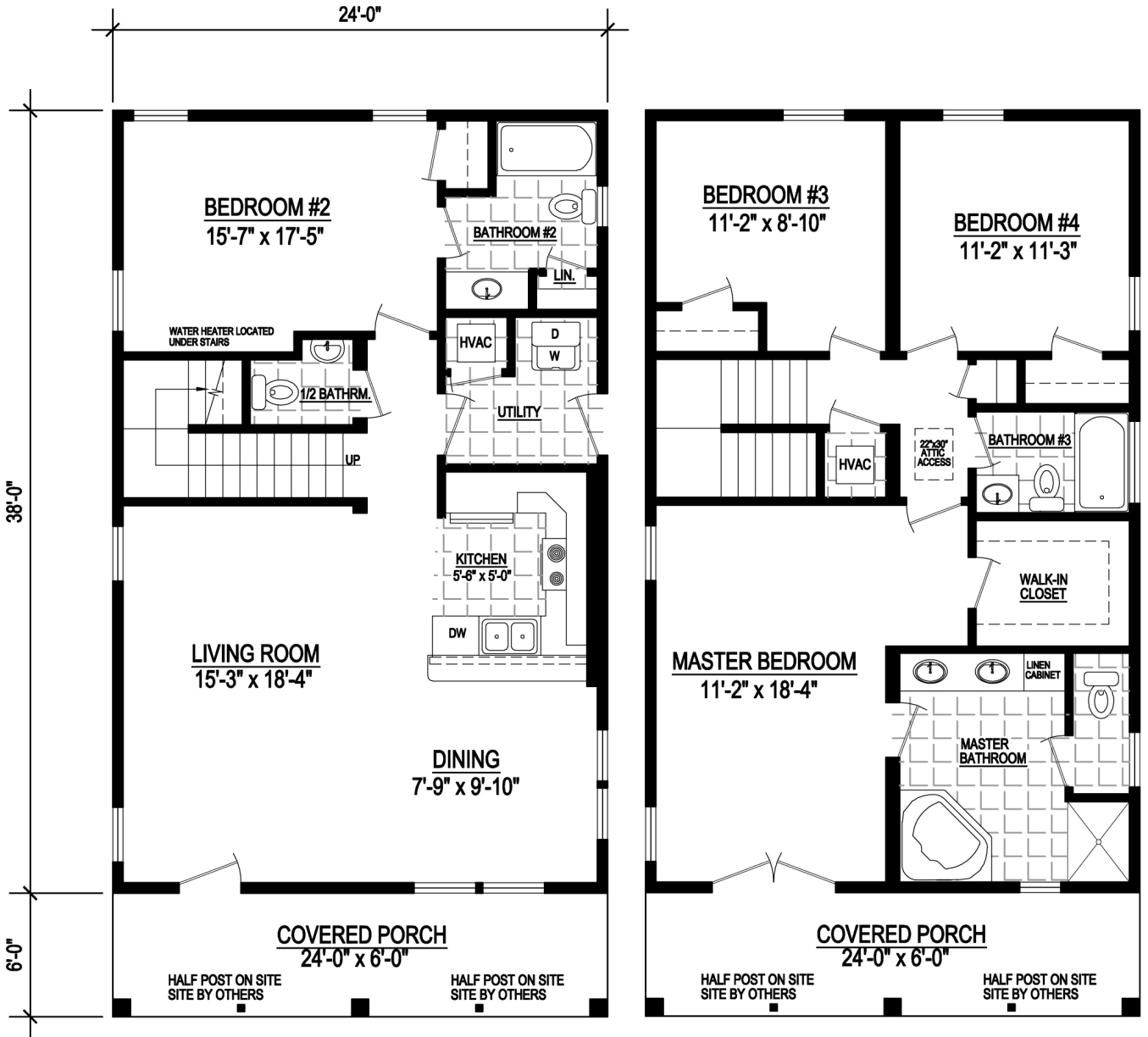




Battery Point

The Battery Point floor plan provides 1,824 square feet of heated/cooled space, with a total of 2,110 square feet of under roof space.

The square footage and other dimensions on our floor plans are approximate. Renderings are not intended to be an accurate representation of the home and are often shown with optional features and/or third-party additions that can be added at additional cost if available in your region or situation.



BATTERY POINT

1824 Sq. Ft. Heated/Cooled
2110 Sq. Ft. Under Roof



**Battery Point
Specifications:**

4 Bedroom / 3.5 Bath

1728 Sq. Ft. Heated/Cooled

1823 Sq. Ft. Under Roof



Affinity Building Systems

62 Murray Blvd. Lakeland, GA

229-482-1200 • affinitybuildingsystems.com

BATTERY POINT