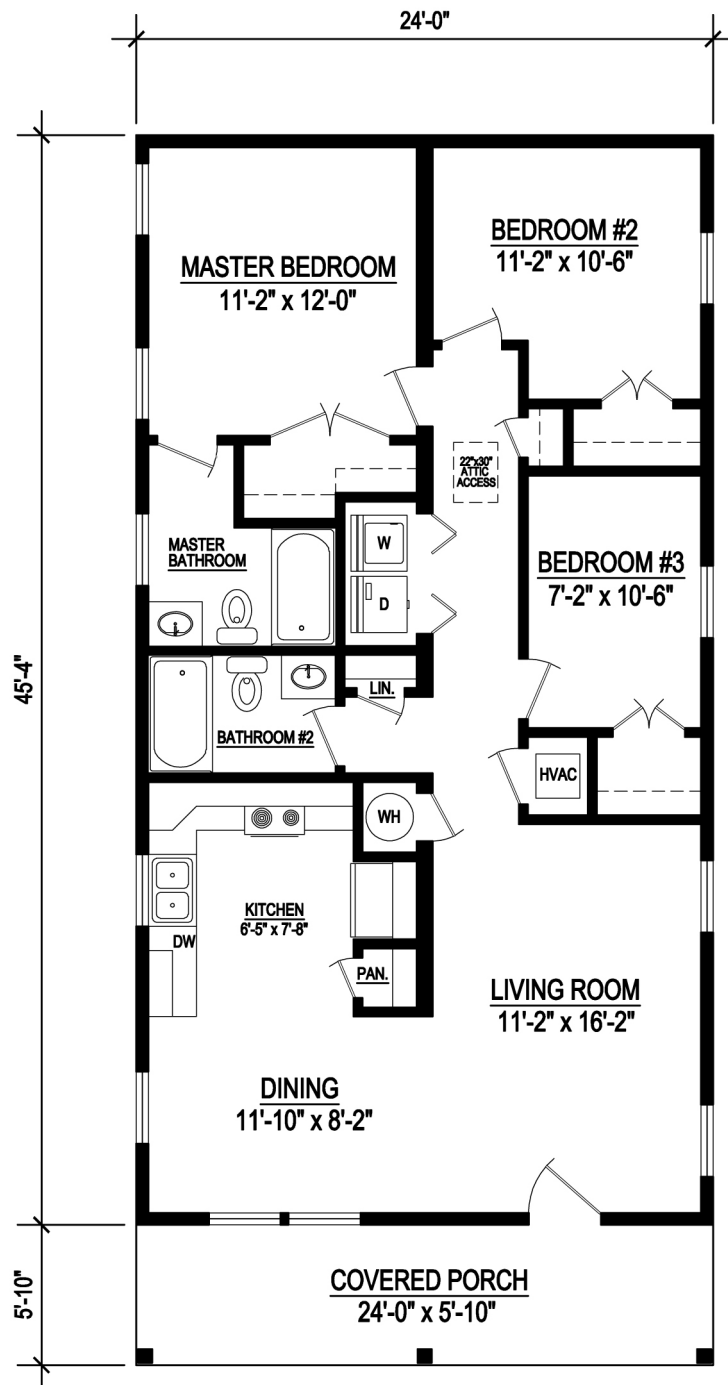




## Fish Hawke

The Fish Hawke is a cute little home that is perfect for a narrow lot. Whether on pilings or a crawl space, the home has a charming set up with open living in the front and a family friendly front porch. The Washer/Dryer area is located conveniently in the hall close to all the bedrooms. With 3 bedrooms and 2 baths, the 1,088 SF has plenty of room for a retired couple, or a small family, just starting out.

*The square footage and other dimensions on our floor plans are approximate. Renderings are not intended to be an accurate representation of the home and are often shown with optional features and/or third-party additions that can be added at additional cost if available in your region or situation.*



# FISH HAWKE

1088 Sq. Ft. Heated/Cooled  
1232 Sq. Ft. Under Roof



**Fish Hawke  
Specifications:**

**3 Bedroom / 2 Bath**

1088 Sq. Ft. Heated/Cooled

1232 Sq. Ft. Under Roof



**Affinity Building Systems**

62 Murray Blvd. Lakeland, GA

229-482-1200 • [affinitybuildingsystems.com](http://affinitybuildingsystems.com)